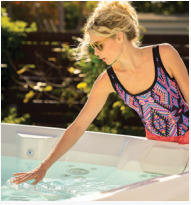


HIGHLIFE® COLLECTION

# JETSETTER™



FreshWater®  
Salt System Ready



100% Filtration  
SilentFlo Circulation



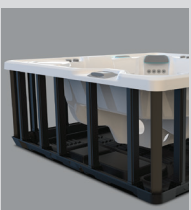
Moto-Massage® DX



Super Energy  
Efficient



Wireless Remote



Polymer Substructure  
& Base Pan



Salt  
System  
Ready  
freshwater®

*Shown with Alpine White Shell and  
Blackwood Cabinet*

<b>People</b>	<b>Seating</b>	<b>Jets</b>	<b>Voltage</b>
3 Seats	Lounge	22 Jets	230 V

**Size**  
213 × 173 × 84 cm

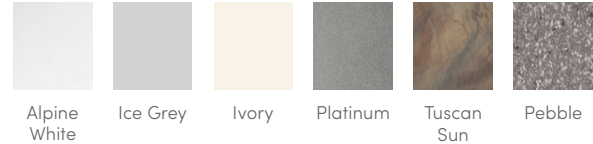
**Water Care**  
FreshWater® Salt System Ready

# HIGHLIFE® COLLECTION

# JETSETTER™



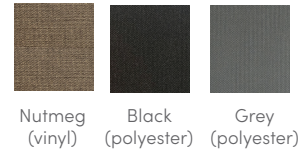
## SHELL COLOURS



## CABINET COLOURS



## COVER COLOURS



## CABINET AND SHELL COLOUR OPTIONS\*

Cabinet Colours	Java	Charcoal	Blackwood	Linen	Brushed Nickel
Shell Colours	Alpine White Ice Grey Ivory Tuscan Sun Pebble	Alpine White Ice Grey Platinum Tuscan Sun Pebble	Alpine White Ice Grey Platinum	Alpine White Ivory Tuscan Sun Pebble	Alpine White Ice Grey Platinum

<b>Seating Capacity</b>	3 seats
<b>Dimensions</b>	213 × 173 × 84 cm
<b>Water Capacity</b>	925 litres
<b>Weight</b>	225 kg dry; 1,390 kg filled**
<b>Jets</b>	22 total <ul style="list-style-type: none"> <li>• 1 Moto-Massage® DX jet (Two nozzles)</li> <li>• 2 SoothingStream™ jets</li> <li>• 1 FootStream™ jet</li> <li>• 1 Rotary Hydromassage jet</li> <li>• 2 Rotary Precision™ jets</li> <li>• 14 Directional Precision™ jets</li> </ul>
<b>Jet Pump</b>	Wavemaster® 9000; One-speed, 2.5 HP Continuous Duty, 5.2 HP Breakdown Torque
<b>Circulation Pump</b>	SilentFlo 5000™ for quiet, continuous filtration
<b>Water Care System</b>	FreshWater® Salt System Ready
<b>Control System</b>	IQ 2020™ with wireless remote control 230 V / 16 amp
<b>Lighting System</b>	Luminescence™ multi-colour four-zone
<b>Heater</b>	Titanium No-Fault™ 1,500 W / 230 V

<b>Energy Efficiency</b>	Multiple Layers of Foam Insulation; Certified to California Energy Commission (CEC) and APSP 14 energy efficiency standards for portable spas
<b>Filtration System</b>	100% no-bypass filtration, top loading Tri-X™ filters, 18 m² effective filtration area
<b>Vinyl Cover</b>	9 to 6 cm tapered, 24 kg/m³ density foam core, with hinge seal
<b>Available Options</b>	
Cover Lifters	CoverCradle™, CoverCradle II or Lift 'n Glide™
Steps	Steps are available to match cabinet colours: Java, Charcoal, Blackwood, Linen, Brushed Nickel
Entertainment	Bluetooth® Wireless Sound System