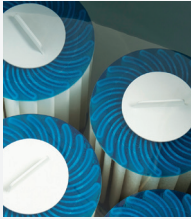


HIGHLIFE® COLLECTION

# GRANDEE™



FreshWater®  
Salt System Ready



100% Filtration  
SilentFlo Circulation



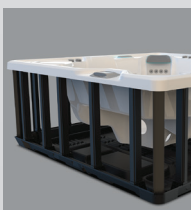
Moto-Massage® DX



Super Energy  
Efficient



Wireless Remote



Polymer Substructure  
& Base Pan



Salt  
System  
Ready  
freshwater®



*Shown with Alpine White Shell and  
Java Cabinet*

People	Seating	Jets	Voltage
7 Seats	Open	49 Jets	230 V

**Size**  
254 × 231 × 97 cm

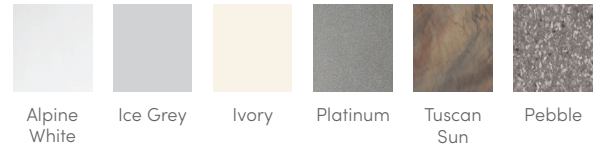
**Water Care**  
FreshWater® Salt System Ready

# HIGHLIFE® COLLECTION

# GRANDEE™



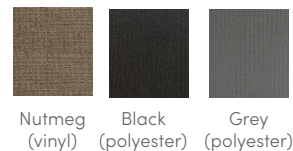
## SHELL COLOURS



## CABINET COLOURS



## COVER COLOURS



## CABINET AND SHELL COLOUR OPTIONS\*

Cabinet Colours	Java	Charcoal	Blackwood	Linen	Brushed Nickel
Shell Colours	Alpine White Ice Grey Ivory Tuscan Sun Pebble	Alpine White Ice Grey Platinum Tuscan Sun Pebble	Alpine White Ice Grey Platinum	Alpine White Ivory Tuscan Sun Pebble	Alpine White Ice Grey Platinum

<b>Seating Capacity</b>	7 seats
<b>Dimensions</b>	254 × 231 × 97 cm
<b>Water Capacity</b>	1,725 litres
<b>Weight</b>	360 kg dry; 2,645 kg filled**
<b>Jets</b>	49 total <ul style="list-style-type: none"> <li>• 2 Moto-Massage® DX jets (Two nozzles each)</li> <li>• 2 SoothingStream™ jets</li> <li>• 2 FootStream™ jets</li> <li>• 3 Rotary Hydromassage jets</li> <li>• 2 Directional Hydromassage jets</li> <li>• 10 Hydrostream™ jets</li> <li>• 26 Directional Precision™ jets</li> </ul>
<b>Water Feature</b>	BellaFontana™ with 3 illuminated arcs of water
<b>Jet Pump 1</b>	WaveMaster® 9000; One-speed, 2.5 HP Continuous Duty, 5.2 HP Breakdown Torque
<b>Jet Pump 2</b>	WaveMaster® 9200; Two-speed, 2.5 HP Continuous Duty, 5.2 HP Breakdown Torque
<b>Circulation Pump</b>	SilentFlo 5000™ for quiet, continuous filtration
<b>Water Care System</b>	FreshWater® Salt System Ready
<b>Control System</b>	IQ 2020™ with wireless remote control 230 V / 20 amp, 50 Hz

<b>Lighting System</b>	Luminescence™ multi-colour four-zone
<b>Heater</b>	Titanium No-Fault® 1,500 W / 230 V
<b>Energy Efficiency</b>	Multiple Layers of Foam Insulation; Certified to California Energy Commission (CEC) and APSP 14 energy efficiency standards for portable spas
<b>Filtration System</b>	100% no-bypass filtration, top loading Tri-X™ filters, 30 m² effective filtration area
<b>Vinyl Cover</b>	9 to 6 cm tapered, 32 kg/m³ density foam core, with hinge seal
<b>Available Options</b>	
Cover Lifters	CoverCradle™, CoverCradle II, Lift 'n Glide™ or UpRite™
Steps	Steps are available to match cabinet colours: Java, Charcoal, Blackwood, Linen, Brushed Nickel
Entertainment	Bluetooth® Wireless Sound System
Hot Tub Cooling System	CoolZone™

\*No special orders or shell substitutions available. Actual colours and products may vary from print representation. See dealer to verify.  
\*\*Includes water and 7 adults weighing 80 kg each.