

HIGHLIFE® COLLECTION

ENVOY™



FreshWater®
Salt System Ready



100% Filtration
SilentFlo Circulation



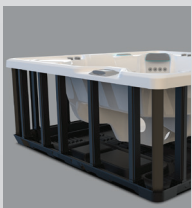
Moto-Massage® DX



Super Energy
Efficient



Wireless Remote



Polymer Substructure
& Base Pan



Salt
System
Ready
freshwater®



*Shown with Alpine White Shell and
Charcoal Cabinet*

People

5 Seats

Seating

Lounge

Jets

55 Jets

Voltage

230 V

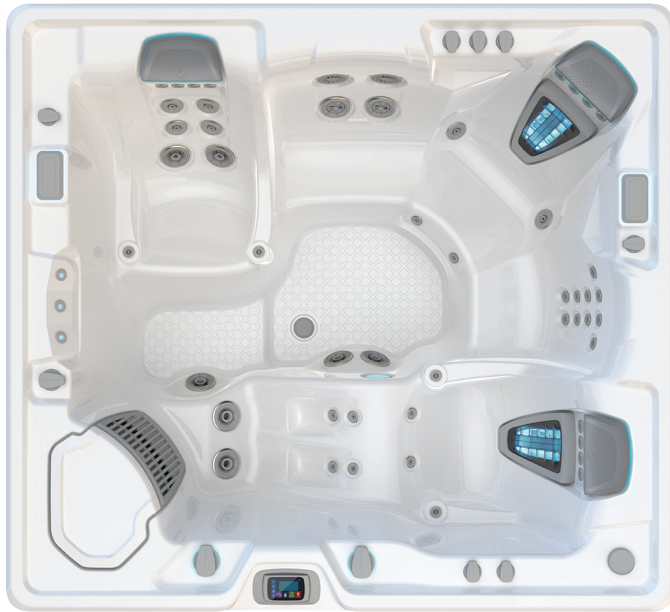
Size

254 × 231 × 97 cm

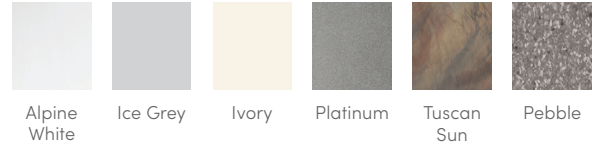
Water Care

FreshWater® Salt System Ready

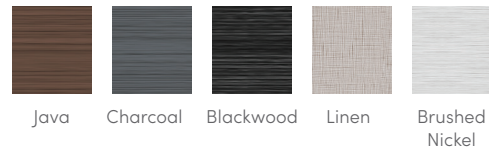
ENVOY™



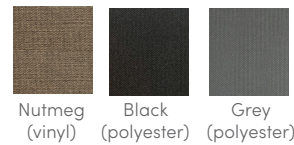
SHELL COLOURS



CABINET COLOURS



COVER COLOURS



CABINET AND SHELL COLOUR OPTIONS*

Cabinet Colours	Java	Charcoal	Blackwood	Linen	Brushed Nickel
Shell Colours	Alpine White Ice Grey Ivory Tuscan Sun Pebble	Alpine White Ice Grey Platinum Tuscan Sun Pebble	Alpine White Ice Grey Platinum	Alpine White Ivory Tuscan Sun Pebble	Alpine White Ice Grey Platinum

Seating Capacity	5 seats
Dimensions	254 × 231 × 97 cm
Water Capacity	1,725 litres
Weight	355 kg dry; 2,480 kg filled**
Jets	55 total <ul style="list-style-type: none"> • 2 Moto-Massage® DX jets (Two nozzles each) • 2 SoothingStream™ jets • 5 FootStream™ jets • 2 Rotary Hydromassage jets • 2 Directional Hydromassage jets • 6 Hydrostream™ jets • 4 Rotary Precision™ jets • 30 Directional Precision™ jets
Water Feature	BellaFontana® with 3 illuminated arcs of water
Jet Pump 1	WaveMaster® 9000; One-speed, 2.5 HP Continuous Duty, 5.2 HP Breakdown Torque
Jet Pump 2	WaveMaster® 9200; Two-speed, 2.5 HP Continuous Duty, 5.2 HP Breakdown Torque
Circulation Pump	SilentFlo 5000™ for quiet, continuous filtration
Water Care System	FreshWater® Salt System Ready

Control System	IQ 2020™ with wireless remote control 230 V / 20 amp, 50 Hz
Lighting System	Luminescence™ multi-colour four-zone
Heater	Titanium No-Fault® 1,500 W / 230 V
Energy Efficiency	Multiple Layers of Foam Insulation; Certified to California Energy Commission (CEC) and APSP 14 energy efficiency standards for portable spas
Filtration System	100% no-bypass filtration, top loading Tri-X™ filters, 30 m² effective filtration area
Vinyl Cover	9 to 6 cm tapered, 32 kg/m³ density foam core, with hinge seal
Available Options	
Cover Lifters	CoverCradle™, CoverCradle II, Lift 'n Glide™ or UpRite™
Steps	Steps are available to match cabinet colours: Java, Charcoal, Blackwood, Linen, Brushed Nickel
Entertainment	Bluetooth® Wireless Sound System
Hot Tub Cooling System	CoolZone™

*No special orders or shell substitutions available. Actual colours and products may vary from print representation. See dealer to verify.
**Includes water and 5 adults weighing 80 kg each.